

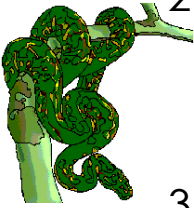


# Rainforest Adventure

There can be three players – the explorers taking part in this game.



1. **Tall Grass** – the grass has got very long. You can't see where you're going and it takes you a long time to go through it. **Wait one turn.**



2. **Python** – you have noticed a green python hanging from a tree. You know it can be dangerous so you go off the path to go around the tree and it takes you **two steps forward.**

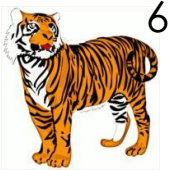
3. **Mist** – you got lost in the mist and you can't see the path forward so the only way to survive is to **go back to the beginning.**



4. **Thick Bushes** – vegetation in the rainforest can get very dense. You have to use a machete to cut out some bushes to find a path. It takes you some time so you **wait one turn.**



5. **Through the River** – the log that was a bridge across the river broke! You fell into a river full of crocodiles and piranhas. You have to quickly swim back to the river bank and the shortest way is **one step back.**



6. **Tiger** – you've noticed the tiger drinking water from the river. You don't want to disturb him so you quietly **go three steps back** and watch the tiger from a safe distance.



7. **Waterfall** – your path goes under the waterfall. You got so wet that you have to **wait one turn** to get dry.



8. **Rafflesia** – you can smell its odour of rotting meat that attracts flies. You don't like the smell so much that you start running until you **get to the end of the path** where **you noticed two jaguars sitting on the tree and very quietly take a picture of them.**



**Now you're ready to go back home. What an adventure!**