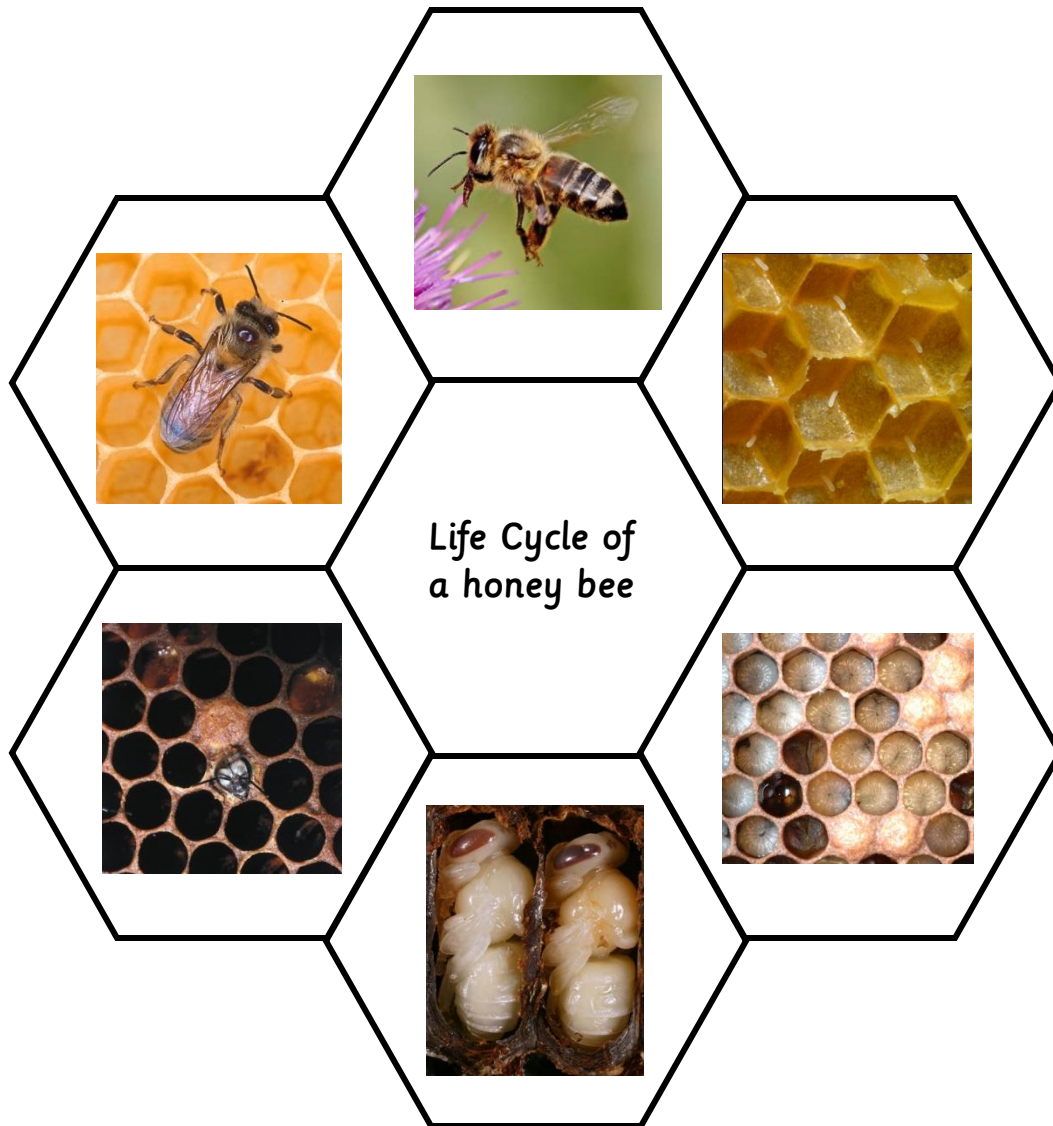


Life Cycle of a honey bee



Instructions:

Print two copies. Cut out both copies on the outside lines. Mount one of them on the yellow card (colour coding for insects) and laminate. That is going to be your control card. Now laminate the other copy and then cut out each segment. The aim is to match the pictures whilst you explain each stage of the life cycle starting from the top clockwise: queen bee, egg, larva, pupa, bee leaving the cell, young bee feeding on honey in the hive. [Here](#) you can read more about the life cycle of a bee.